

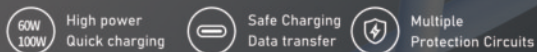


60W/100W C to C Silicone Cable 1M

CA34-(077~080)

Color Options: ● ● ● ● ●
Power Options: 60W/100W

Material: Aluminum Alloy Plug & Silicone
Current: 60W/100W Max
Transmission Rate: 480M



3A USB-A to C Silicone Cable 1M

CA34-(061~064)

Color Options: ● ● ● ● ●
Length Options: 1M/2M

Material: Aluminum Alloy Plug & Silicone
Current: 3A, 15W Max
Transmission Rate: 480M



27W C to L Silicone Cable 1M

CA34-(073~76)

Color Options: ● ● ● ● ●
Length Options: 1M/2M

Material: Aluminum Alloy Plug & Silicone
Current: 27W Max
Transmission Rate: 480M



2.4A/3A/27W/60W PVC Cable

CA54-(01~06)

Length Options: 1M/2M

Material: PVC
Current: 2.4A/3A/27W/60W
Transmission Rate: 480M



2.4A/3A Braided Charging Cable White 1M

CA55-(01~02)

Material: Braided+ABS Shell
Current: 2.4A/3A
Transmission Rate: 480M



12W/3A/27W/60W/100W LED Aluminum Alloy Braided Cable Black 1M

(CA44/45/46)-11

CA47-(11~12)

Material: Aluminum Alloy+Braided
Current: 12W/3A/27W/60W/100W Max
Transmission Rate: 480Mbps



27W/60W/100W Braided Charging Cable White

CA55-(03~08)

Power Options:27W/60W/100W
Length Options:1M/2M/3M

Material: Braided+ABS Shell
Current: 27W/60W/100W
Transmission Rate: 480M



12W/5A/27W/60W/100W Smart Power Off Alluminum Alloy Braided Cable Black 1M

CA12-(01~05)

Material: Aluminum Alloy +Braided
Current: 12W/5A/27W/60W/100W Max
Transmission Rate: 480Mbps



66W 3 in 1 C to C/L/M Braided Cable Black 1.2M

CA29-02

Material: Aluminum Alloy & Strong Braided Cable
Output C TO L/M: 15W Max
Output C TO C: 66W Max
Function: Charging/Data Transfer
Type C Interface Support Data Transmission



100W Type-C+A to C+L PVC+Aluminum Alloy Braided Cable Black 1.2M

CA39-01

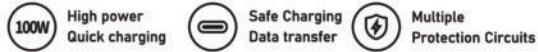
Material: PVC+Aluminum Alloy Braided
Output C TO L: 27W/A to L: 10W
Output C TO C: 100W/A to C: 10W
Transmission Rate: 480Mbps



60W/100W C TO C Digital Fast Charging Braided Cable Black 1M

CA38-(01~02)

Material: TPE+Aluminum Alloy+Braided
Current: 20V/3A 60W; 20V/5A 100W
Transmission Rate: 480Mbps



27W C to L Angled LED Zinc Alloy Braided Black 1M

CA48-11

Material: Zinc Alloy+Braided
Current: 27W Max
Transmission Rate: 480M



60W C to C Angled LED Zinc Alloy Braided Black 1M

CA49-11

Material: Zinc Alloy+Braided
Current: 60W Max
Transmission Rate: 480M



100W USB-A/C To C Car Spring Charging Cable with Digital Display 1.5M Black Support Carplay

CA56-01

Material: TPU+Woven
Current: 20V=5A 100W
Length:1.5M
Transmission Speed: 480Mbps



240W USB-C High Frequency Data Charging Braided Cable 1.8m Black

CA57-01

Color: Grey
Data Transmission: 40Gbps Max
Support Maximum
240W Fast Charging.
Resolution:4K@60Hz/8K@60Hz
Wire Diameter: 4.8±0.1
Material:Aluminum Alloy Shell+Nylon Braided
Length: 1.8M



A to C Female OTG/C to A Female Charging Data Transfer Adapter

CA01-03

CA01-04

USB 2.0 OTG Adapter

Wide Compatibility

Support Charging and Data Transmission

Support 6A High Current, 480Mbps Transmission Speed

FAST
Support 5V-2ASafe Charging
Data TransferMultiple
Protection Circuits

C to L/L to C Female Audio Charging Adapter

CA01-01

CA01-02

Support 5V2A Charging Function

Support Data Transmission Function

Support Type-C Headphone Audio Transmission

Support External Keyboard, Mouse, U Disk,

Card Reader, Hard Disk and Other Devices

Flame
RetardantSmart
DistributionMultiple
Protection Circuits

HDMI 2.1 8K Cable Black 1.5M

CA52-01

Length Options: 1.5M/3M/5M

8K@60Hz Resolution.

Universal Compatibility.

Mature Craftsmanship With Originality.



Ultra HD

HDMI Interface
DevicesAluminium
Alloy Shell

iP To 3.5mm Three-level Audio Male Black Braided Audio Cable 1m Gunmetal

CA50-04

Function: AUX Audio Adapter Cable

Output: AUX 3.5 Level 3 Male Head

Compatibility: 8Pin Female Seat

Length: 1m

Material: 15/0.05*3C OD2.8MM TPE

Product Process: Outer Weaving +Aluminum Alloy Injection Molding

STABLE
0 MurmurSuitable For
L-Port iP SeriesProtection
Circuits

Type-C To 3.5mm Three-level Audio Male Black Braided Audio Cable 1m Gunmetal

CA50-05

Function: AUX Audio Adapter Cable

Output: AUX 3.5 Level 3 Male Head

Compatibility: Suitable For C-port

Length: 1m

Material: 15/0.05 * 3C OD2.8MM TPE

Product Process: Outer Weaving +Aluminum Alloy Injection Molding

STABLE
0 MurmurSuitable For
C-PortProtection
Circuits

USB 3.0 Male to Female Extension Cable 1M

CA53-01

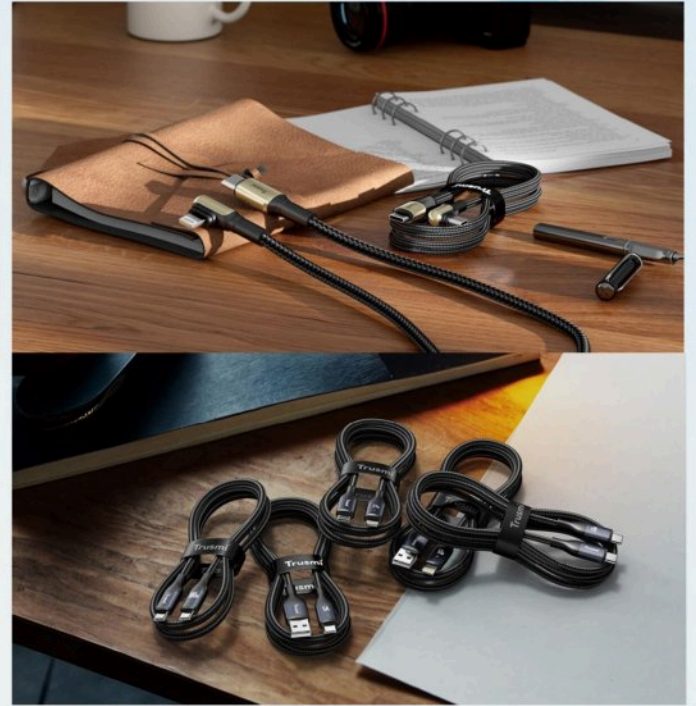
USB3.0 5Gbps Transmission.

Universal Compatibility, Can Extend Charging Cable.

Aluminum Shell, Durable Nylon Braided.

Woven Mesh+
Aluminium Housing5GBPS
Data TransferMultiple
Protection Circuits

03 Product Portfolio



CABLES

2-in-1 Type-C to C Female+3.5mm Four-level Audio Female Adapter Cable

CA50-01

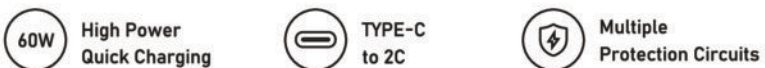
Support OTG Function, Compatible With Mainstream
Mobile Phone and Computer Models on the Market
Support Charging and Audio Transmission
Support Maximum Charging Power of 60W



2-in-1 Type-C to Dual C Female Adapter Cable

CA51-01

Support OTG Function, Compatible With Mainstream
Mobile Phone And Computer Models On The Market
Support Charging And Audio Transmission
Support Maximum Charging Power of 60W



Lightning to 3.5mm Jack Adapter 20cm

CA50-02

Output: AUX 3.5 Level 4 Mother Seat
Compatibility: 8pin Mobile Phone
Length: 20 CM
Material: 10/0.08 * 4C OD2.8MM TPE
Product Process: Outer Weaving+Aluminum Alloy Injection Molding
Support: Call+Listen to the Music



Type C to 3.5mm Jack 10CM

CA50-03

Function: Call+Listen to the music
Output: AUX 3.5 Level 4 Mother Seat
Compatibility: TC Mother Seat 99% Phone
Length: 9CM
Material: 10/0.08 * 4C OD2.8MM TPE
Product Process: Outer Weaving+Aluminum Alloy Injection Molding



Wired In-ear Earphone Type C/Lightning

EP01-01

EP02-01

Frequency Range: 20Hz - 20KHz
Impedance: 16Ω ±10%
Speaker: φ10.0mm
Sensitivity: 102±3dB
Plug Type: AB136D type-c



Universal Smart Pencil

SP01-01

SP01-02

Charging Voltage DC: 4.2V~5.0V
Charging Current: About 220mA
Charging Interface: Type-c
Pen Body Material: Aluminum Alloy
Color: White
Pen Tip Material: Pom





Vacuum Magnetic Car Holder (Electric) Black

LP19-02

Input: 5V
 Interface: Type-C
 Material: High Quality Alloy+ABS+Silicone+Zinc Alloy
 Process: Electric Vacuum Adsorption Process
 Installation Method: Vacuum Adsorption
 Fixed Positions: Glass, Ceramic Tiles, Mirrors, PVC Board Surface, Smooth Table Surface
 Product Size: 63*37*130mm
 Net Weight: 152g (Excluding Accessories)
 Magnetic Adsorption Force: 4300 Gauss



Vacuum Magnetic Car Holder (Manual) Black

LP19-01

Material: PC+PVC
 Process: Sun Drying+Polishing+Oil Spraying
 Magnetic Adsorption Force: 16N
 Installation Method:
 Vacuum Adsorption Rotation
 Fixed Position: Smooth Surface Glass
 Product Size: 60*61*47mm
 Net Weight: 105g



Motorcycle/Bicycle Phone Holder Black

LP21-01

Material: ABS+PC+silicone
 Craftsmanship: Sun Drying Pattern
 Weight: 137.5g Bare Machine



38W A+C LED Quick Car Charger Black

CC03-011

Material: ABS
 Input: DC12V-24V
 Type-C output: 5V---3A/9V---2.22A/12V---1.67A 20W Max
 USB-A output: 5V---3A/9V---2A/12V---1.5A 18W Max
 Total output: 38W Max



48W 1A1C Car FM Colorful Transmitter

CC11-01

Bluetooth version : 5.3
 FM frequency : 87.5 Mhz-108.0 Mhz
 QC3.0 port output : 5V/3A、 9V/2A、 12V/1.5A
 PD port output : 5V/3A、 9V/3A、 12V/2.5A
 PPS:3.3V-11V/3A
 Input voltage : 12V-24V
 Maximum output power : 48W



Hands-free



FM
Transmitter



Voltage
Detection

48W A+C Carbon Fiber Quick Car Charger

CC01-011

Input: DC 12-24V
 Type-C Output: 5V-3A, 9V-3A, 12V-2.5A, 20V-1.5A, 30W Max;
 USB-A Output: QC3.0 5V-2.4A, 9V-2A, 12V-1.5A, 18W Max.
 Total Output: 48W Max.



CE Certified



Ultra
Lightweight



Multiple
Protection Circuits

54W 1A1C Car FM Transmitter

CC10-01

Bluetooth version: 5.3
 FM frequency: 87.5MHz-108.0MHz
 QC3.0 port output: 5V/3A, 9V/2A, 12V/1.5A
 PD port output: 5V/3A, 9V/3A, 12V/3A
 PPS:3.3V-11V/3A
 Input voltage: 12V-24V
 Maximum output power: 54W
 U-Disk: 64GB max



Hands-free



FM
Transmitter



Voltage
Detection

55W 2C+1L Metal (Support L to C) Quick Car Charger

CC06-011

Voltage Input: DC 12-24V
 USB-C1: 5V-3A 9V-3A 12V-2.5A
 USB-C2&L: 5V-2.4A 9V-2.4A
 USB-C1: 30W
 USB-C2&L: 25W



CE Certified



USB-C1
USB-C2
USB-L1



Multiple
Protection Circuits

PD60W A+C Metal Fast Car Charger

CC08-01

Input: DC 12-24V
 Type-C: DC5V/3A 9V/3A 12V/2.5A(Max30W)
 USB-A: DC5V/3A 9V/3A 12V/2.5A(Max30W)
 Type-C+USB-A total: 5V4A(Max20W)
 Material: Zinc; Surface: Plating+UV
 Authentication: CE Rohs



CE Certified



USB-A1
USB-C1



Multiple
Protection Circuits

PD66W A+C Metal Fast Car Charger Grey

CC09-01

Type-C: DC5V/3A 9V/3A 12V/3A(Max 36W)
 PPS:3.3-11V/3A
 USB-A: DC5V/3A 9V/3A 12V/2.5A(Max30W)
 Output:Type-C+USB-A Total: 36W+30W-66W
 Material: Zinc
 Surface: Plating+UV
 Authentication: CE Rohs



CE Certified



USB-A1
USB-C1



Multiple
Protection Circuits

Magnetic Car Phone Holder (Stick-on Version)

LP05-011

Material: ABS+ Silicone
Installation Area: Dashboard
Applicable models: 3.5-6.5 inches

3M

Adhesive



Fit For
3.5-6.5 inch



One-Hand



15W Wireless Foldable Dashboard Magnetic Car Phone Holder

LP08-01

Material: Pure Aluminum + Magnets+PCB
Process: Texturing
Fixed position: Dashboard
Input: 5V-2A 9V-2A 12V-1.5A
Output: 5/7.5/10/15W (Max)



Super-Mini
Magnet Head



Work For All
Phones & Case



With Magnetic
Guide Piece



Clamping Type Air Outlet Car Phone Holder

LP06-011

Material: PC +ABS
Installation Area: Strip air vents
Applicable models: 4.7-7.2 inches



Stable and not
shaking



Work For All
Phones&Case



One-Hand



360°Adjustable Foldable Magnetic Car Phone Holder

LP09-01

Material: PC+Magnets
Process: metal plating
Fixed position: Dashboard behind display



3M Adhesive



Work For All
Phones & Case



With Magnetic
Guide Piece



Multi-angle Rotation Foldable Magnetic Car Phone Holder

LP07-011

3M Adhesive
Material: PC +ABS
Install way: Stick-on type
Fixed position: Center console
Work For All Phones & Case: With Magnetic Guide Piece

3M

Adhesive



Work For All
Phones & Case



With Magnetic
Guide Piece



Rotatable Air Outlet Magnetic Car Phone Holder

LP10-01

Material: PC+Magnets
Process: metal plating
Fixed position: air vent



Super-Mini
Magnet Head



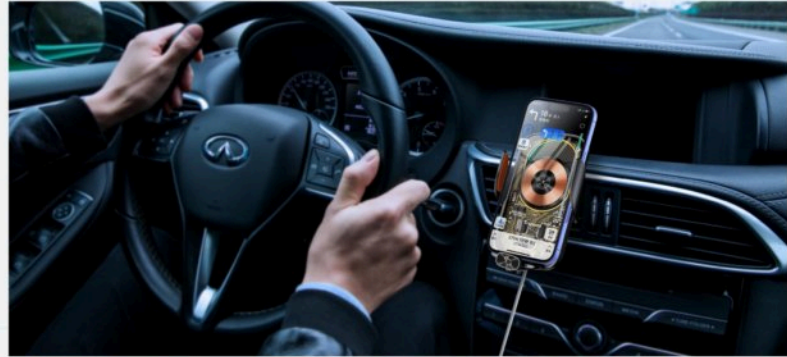
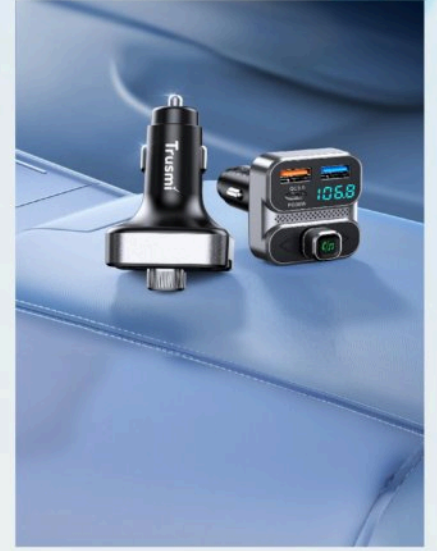
Work For All
Phones & Case



With Magnetic
Guide Piece

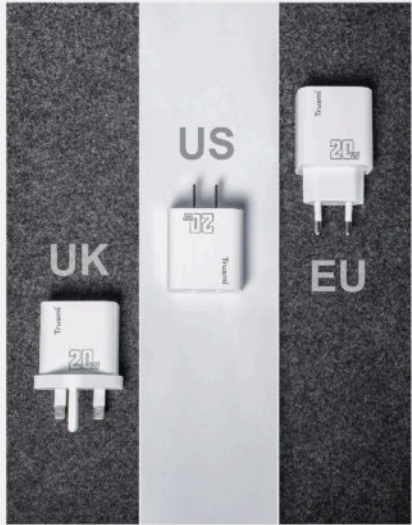


03 Product Portfolio



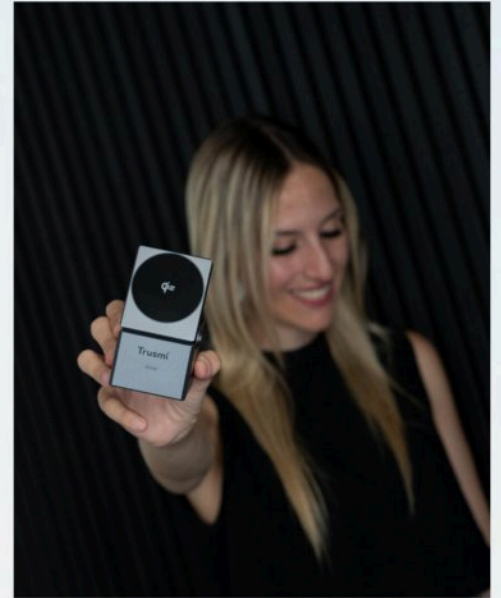
CAR ACCESSORY

03 Product Portfolio



CHARGERS

03 Product Portfolio



Others

10.5W USB-A/C Travel Adapter Charger Black

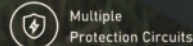
CH19-01

USB-C + USB-A

Rating:100-250V~10A Max,2500W Max

Input:100-250V~,50-60Hz,0.5A

USB Output:5.0V-2.1A(Total),2.1A Max Per Port



20W 1C2A Travel Adapter Charger Black

CH18-01

USB-C + USB-A + USB-A

Rating:100-250V~10A Max,2500W Max

Input:100-250V~,50-60Hz,0.5A

USB-C Output:5.0V-3.0A 15.0W,9.0V-2.22A 20.0W,12.0V-1.67A 20.0W

USB-A1/A2 Output:5.0V-3.0A 15.0W,9.0V-2.0A 18.0W,12.0V-1.5A 18.0W

USB-C Output + USB-A1/A2 Output: 5.0V-3.0A 15.0W Max

Total DC Output:20.0W



35W 3C2A Travel Adapter Charger White

CH16-11

USB-C x 3 + USB-A x 2

Rating: 100-250VAC,10A Max,2500W Max

Single port output mode:

USB-A1/A2/C1/C2 Output: 5V/2.4A,12W

USB-C3 Output: 5V/3.0A 15W,9V/3.0A 27W,15V/2.33A 35W,20V/1.75A,35W

Multi-port Output :

USB-A1+A2+C1+C2 Output: 5V/3A,15W(Total),2.4A Max Per Port

USB-A1+A2+C1+C2+C3 Output: 5V/4A,20W(Total), 2.4A Max Per Port

Total DC Output: 35W

Plastic Material: Flame Retardant PC



70W 3C2A Travel Adapter with Cable Black

CH18-02

USB-C x 3 + USB-A x 2

Rating: 100-250VAC, 10A Max, 2500W Max

Single-Port Output Mode:

USB-C1: 5V3A, 9V/3A, 12V/3A, 15V/3A, 20V/3.5A, 70W

USB-A1/A2: 5V/2.4A, 12W; USB-C2/C3: 5V/3.0A, 15W

Multi-Port Output Mode:

USB-C1: 5V/2.4A, 9V/3A, 12V/3A, 15V/3A, 20V/2.25A, 45W

USB-A1/A2: 5V/2.4A, 12W, USB-C2/C3: 5V/3.0A, 15W

Total DC Output: 70W

Plug Types: UK, Europe, USA, Australia

Materials: Copper + flame retardant PC



PD40W 2C GaN Fast Charger White(EU)

CH25-03

Plug:EU/US/UK

Input: 100-240V~ 50/60Hz 1.0A Max

Single Port Output Mode: Type-C1/Type-C2 Output:
5.0V~3.0A 15.0W, 9.0V~3.0A 27.0W, 12.0V~3.0A 36.0W,
15.0V~2.67A 40.0W, 20.0V~2.0A 40.0W

Combined Output Mode: Type-C1+Type-C2 Output: 20.0W+20.0W

Material: PC



CE Certified



TYPE-C
Support 40W Output



Multiple
Protection Circuits



PD45W A+C GaN Fast Charger With C-C 60W Cable Set Black(EU)

CH06-050

Plug:EU/US/UK

Input : 100~240V~1.5A 50/60Hz

Type-C Output : 5V~3A/9V~3A/12V~3A/15V~3A 45W Max.

USB A Output : 5V~3A, 9V~2A, 12V~1.5A 22.5W Max.

C+A : 30W+12W max

Material: PC Fire Proof

Cable Length: 1m C to C 60W



CE Certified



USB-A+C
Support 45W Output



Multiple
Protection Circuits



PD65W A+C+L(Support L to C Charging) GaN Fast Charger White(EU)

CH13-079

Plug:EU/US/UK

Output: USB-C: 5V~3A/9V~3A/12V~3A/15V~3A/20V~3.25A(65W) Max

PPS: 11V~3A(33W) Max

USB-L: 5V~2.4A/9V~2.4A/12V~2.4A/15V~2.4A/20V~2.4A(48W) Max

PPS: 11V~2.4A Max

USB-A: 5V~3A/9V~3A/12V~2.5A/15V~2A/20V~1.5A Max

Combined Output:

C+L: 45W+18W Max, C+A: 45W+18W Max

C+L+A: 45W+(SHR) 5V=3A(15W), L+A: (SHR) 5V=3A(15W)



CE Certified



TYPE-C
Support 65W Output



Multiple
Protection Circuits



PD30W A+C GaN Fast Charger White (AU)

CH02-039

Plug:EU/US/AU/UK

Input: 100-240V-50/60Hz, 0.8A

USB-A Output: 5V~3A, 9V~2A, 12V~1.5A 18W Max

USB-C Output: 5V~3A, 9V~3A, 12V~2.5A, 15V~2A, 20V~1.5A 30W Max

(PPS) 3.3V-11V~2.7A

Dual Port Output: 5V~4A

Net Weight: 70g

Dimension: 70*43*27mm



SAA Certified



Output Ports
Safe Charging



Multiple
Protection Circuits

2.5W Magnetic Wireless Charger For Apple Watch White 1M

CD01-01

Input:5V=0.5A
 Output:2.5W
 Transmission Frequency:325KHZ
 Cable Length:1 Meter
 Product Weight: 19g
 Interface: Type-C
 Compatibility:
 Apple Watch 10/9/8/7/6/5/4/3/2/1/se/ Ultra
 Product Size:27.65*27.65*7.05mm



- Support 5V=0.5A
- Proximity Auto Attachment
- Easy To Carry

SAM Magnetic Wireless Charger White 1M

CD01-02

Input: 5V=0.5A
 Output Power: 2.5W
 Transmission Frequency: 110-205KHZ
 Product Size: 29.3x7.7mm
 Wire Length: 1m
 Product Weight: 21g
 Interface: Type-C
 Compatibility:
 Watch7/Watch6/Watch5/Watch4/Watch3/
 6Classic/4Classic/Active2/Active1



- Support 5V=0.5A
- Proximity Auto Attachment
- Easy To Carry

Qi2 3-IN-1 Cube Wireless Charging Station Gray

CD02-01

Input Compatibility: QC3.0, PD3.0 And Other Protocols
 Rated Input: 9V=3A,12V=2.5A (PD-30W Or Above Charger)
 Input Interface: USB-C
 Output:Mobile Wireless Charging: 15W
 Wireless Charging For Earphones: 5W
 Watch Wireless Charging: 2.5W
 Transmission Frequency: 360KHZ
 Mobile Phone Charging
 Distance: ≥4mm
 Product Size:68.5*60*66mm
 Net Weight Of Product: 248g
 Magnetic Force: 0.8kg



- Electrostatic
- FOD Sensor
- Super Magnetic

Qi2 3-IN-1 Desktop Foldable Wireless Charging Station Gray

CD02-02

Input Compatibility: QC3.0, PD3.0 And Other Protocols
 Rated Input: 9V=3A/12V=2.5A (PD-30W Or Above Charger)
 Input Interface: USB-C
 Output: Mobile Wireless Charging: 15W
 Wireless Charging For Earphones: 5W
 Watch Wireless Charging: 2.5W
 Transmission Frequency: 360KHZ
 Mobile Phone Charging Distance: ≥ 4MM
 Product Size: 92mm*64mm*34mm
 Net Weight Of Product: 248g
 Magnetic Force: 0.8Kg
 Product Process: ABS+PC Spray Painting



- Electrostatic
- FOD Sensor
- Super Magnetic

»» TRAVEL CHARGER SERIES



PD20W A+C GaN Fast Charger Set with C-L Cable White(US)

CH11-02

Plug:EU/US/UK

Color Options: ● ● ● ●

Input:100-240V 50/60Hz 0.5A

USB Output:5V=3A 9V=2A 12V=1.5 18W Max

Type-C Output:5V=3A 9V=2.22A 12V=1.67A 20W Max

USB and Type-C Total Output:5V=3A Max

Material: PC Fireproof Raw

Cable: 1m C to L 20W



CE Certified



Output Ports
Safe Charging



Multiple
Protection Circuits

10.5W USB-A Charger White(EU)

CH09-060

Plug:EU/US

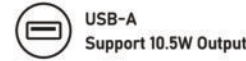
Input:100-240V-50/60Hz 0.3A

Output:5V 2.1A

Material: PC fireproof raw



CE Certified



USB-A
Support 10.5W Output



Multiple
Protection Circuits



PD25W Single C LED GaN Fast Charger White(EU)

CH15-11

DC5V=3A,9V=2.77A(Max 25W)

PPS:3.3-5.9V/3A 3.3-11V/2.75A

Size: 63*41*27mm

Material: PC Fireproof Raw



CE Certified



USB-C
Support 25W Output



Multiple
Protection Circuits



PD100W 2C1A GaN Fast Charger White(UK)

CH22-03

Plug:EU/US/UK

Input:110-240V~ 50/60Hz 2A Max ;

Type-C1 Output:5.0V=3.0A 15.0V,9.0V=3.0A 27.0W,
12.0V=3.0A 36.0W,15.0V=3.0A 45.0W,20.0V=5.0A 100W;

Type-C2 Output:5.0V=3.0A 15.0V,9.0V=3.0A 27.0W,
12.0V=3.0A 36.0W,15.0V=3.0A 45.0W,20.0V=3.25A 65W;

USB-A Output:5.0V=3.0A 15.0V,9.0V=2.0A 18.0W,
12.0V=1.5A 18.0W,10.0V=2.25A 22.5W

Total Output:100.0W Max; Type-C1+Type-C2 Output:65.0W+30.0W

Type-C1+USB-A Output:65.0W+22.5W; Type-C2+USB-A Output:7.5W+7.5W

Type-C1+(Type-C2+USB-A) Output:65.0W+7.5W+7.5W



CE Certified



Support 100W
Output



Multiple
Protection Circuits



PD20W A+C GaN Fast Charger White(UK)

CH21-01

Input:100-240V 50/60Hz 0.8A Max
 Output A:3.6-6.5V \rightarrow 3.0A,6.5-9.0V \rightarrow 2.0A,9.0-12.0V \rightarrow 1.5A (18W MAX)
 Output C:5.0V \rightarrow 3.0A,9.0V \rightarrow 2.22A, 12.0V \rightarrow 1.67A (30W MAX)
 Output A+C:5.0V \rightarrow 3.0A
 Material:PC



CE Certified



USB-A+C
Support 20W Output



Multiple
Protection Circuits

PD20W Single C Charger White(UK)

CH23-01

Input:100-240V AC 50/60Hz 0.8A Max
 Output:5.0V \rightarrow 3.0A,9.1V \rightarrow 2.22A,12.0V \rightarrow 1.67A (20W MAX)
 Material:PC Fireproof
 CE Certified



CE Certified



TYPE-C
Support 20W Output



Multiple
Protection Circuits

PD30W A+C+L(Support L to C Charging) GaN Fast Charger White(UK)

CH12-078

Plug:EU/US/UK

Input:100-240Vac 50/60Hz 0.8A Max
 Output:
 USB-C :5.0V \rightarrow 3.0A/9.0V \rightarrow 3.0A/12.0V \rightarrow 2.5A/15.0V \rightarrow 2.0A/20.0V \rightarrow 1.5A
 (30.0W)or (PPS)29.7W Max
 USB-L : 5.0V \rightarrow 3.0A/9.0V \rightarrow 3.0A/12.0V \rightarrow 2.5A/15.0V \rightarrow 2.0A/20.0V \rightarrow 1.5A
 (30.0W) or (PPS) 29.7W Max
 USB-A: 5.0V \rightarrow 3.0A/9.0V \rightarrow 2.0A/12V \rightarrow 1.5A(18.0W)
 Combination Charging: 15.0W



CE Certified



USB-A+C
Support 30W Output



Multiple
Protection Circuits

PD30W A+C GaN Fast Charger White(US)

CH02-037

Plug:EU/US/UK

USB Output: 5V \rightarrow 3A, 12V \rightarrow 1.5A,
 C Port Output: 9V \rightarrow 3A,12V \rightarrow 2.5A, 15V \rightarrow 2A,20V \rightarrow 1.5A
 Dual Port Use: 5V \rightarrow 4A
 Net Weight: 56g
 Size: 60.2*44*27mm
 Material: PC Fireproof



CE Certified



USB-A+C
Support 30W Output



Multiple
Protection Circuits



PD20W A+C GaN Fast Charger White(AU)

CH01-035

Plug:EU/UK/AU/US

Input:100-240V~50/60Hz,0.6A

USB-A Output: 5V~3A, 9V~2A, 12V~1.5A

USB-C Output: 5V~3A, 9V~2.22A, 12V~1.67A

Dual port Output: 5V~3A

Net weight: 52g

Bare Size: 60.2*44*27mm



SAA Certified



Output Ports
Safe Charging



Multiple
Protection Circuits

PD65W 1A+2C GaN Fast Charger White(AU)

CH03-043

Plug:EU/US/AU

Input:100-240V~50/60Hz,1.5A

Output USB-C1/C2:5V~3A, 9V~3A,12V~3A,

15V~3A,20V~3.25A

(PPS)3.3V-21V~3A65W Max

USB-A: 5V~3A,9V~3A,12V~2.5A,20V~1.5A30W Max

Total Output:65W Max

Net Weight: 120g

Dimension: 58*42*32mm



SAA Certified



Output Ports
Safe Charging



Multiple
Protection Circuits



PD65W A+2C GaN Fast Charger With C-C 60W Cable Set Black (EU)

CH05-047

Plug:EU/US/UK

Type-C1 Output:5V~3A 15W, 9V~3A 27W,12V~3A 36W 15V~3A 45W,20V~3.25A 65W Max.

Type-C2 Output:5V~3A 15W, 9V~2.22A 20W,12V~1.67A 20W Max.

USB-A Output:5V~3A 15W 9V~2A 18W,12V~1.5A 18W Max.

C1+C2 Output:45W+20W

C1+A Output:45W+18W;

C2+A Output:15W

C1+(C2+A) Output:45W+15W

Total Output: 65W Max.

Cable Length:1m C-C 60W

Material: PC Fire Proof



CE Certified



Output Ports
Safe Charging



Multiple
Protection Circuits