

Semi-in-ear Wireless Earphone Colorful Series

WS04-01

Color Options:

Bluetooth: 5.4
 Playtime: 4.5 Hours
 Headphone Battery: 30mAh
 Case battery: 250mAh
 Over Voltage Protection For Case: 30V



Multifunctional Wireless Earphone with LED Screen

WS08-01

Playtime: 4.5 Hours
 Headphone Battery: 30mAh
 Case Vattery: 650mAh
 Over Voltage Protection For Case: 30V



ANC+ENC Dual Mic True Wireless Earphone

WS17-011

Bluetooth Version: 5.4
 Transmission Distance: $\geq 10M$
 Battery Capacity (Charging Case) : 400mAh 3.7V
 Battery capacity (Headphone) : 35mAh 3.7V
 Charging Time (Charging Case) : ≈ 2 hours
 Music Playtime (Headphphone) : ≈ 8 hours
 Music Playtime With Charging Case: ≈ 18 hours



OWS Clip-On Bluetooth Earphone

WS18-(011~012)

Bluetooth Version: V6.0
 Battery Capacity: 35mAh For Earphones
 180mAh For Charging Case
 Charging Time: About 1.5 Hours
 Standby Time: 48 Hours+
 Play Time: $\geq 5H$
 Transmission Distance: $\geq 10M$
 Speaker Size: 11MM
 Frequency Range: 20Hz~20kHz
 Microphone Sensitivity: $96\pm 3.0dB$
 Rated Input: 3.7V



ENC Zinc Alloy Metal Semi-in-ear Wireless Earphone

W15-011

Bluetooth: 5.4
 Playtime: 5 Hours
 Headphone Battery: 30mAh
 Case Battery: 300mAh
 Over Voltage Protection For Case: 30V



ENC Zinc Alloy Metal In-ear Wireless Earphone

W16-011

Bluetooth: 5.4
 Playtime: 5Hours
 Headphone Battery: 30mAh
 Case Battery: 300mAh



»» WIRELESS BLUETOOTH HEADSET





ANC Wireless Bluetooth Headphones

BH01-01



Active Noise Cancellation



High Quality voice



2 ANC Mics & 1 ENC Mic

Bluetooth Solution: JL7006
 Bluetooth Version: V5.4
 Battery Capacity: 600mAh
 Charging Time: About 2.5 hours
 Standby Time: About 150 hours
 Play Time: About 50 hours
 Transmission Distance: ≥ 10 Meters
 Speaker Impedance: $32\Omega \pm 15\%$
 Frequency Range: 20Hz-20KHz
 Speaker Size: 40mm
 Speaker Sensitivity: 99 ± 3 dB
 Microphone Sensitivity: 42 ± 3 dB
 Rated input: 5V \approx 500mA
 Audio Interface: AUX
 Voltage: 3.7V
 Bluetooth Protocol/HFP/HSP/A2DP/ACRCP

Stylish Wireless Bluetooth Headphones

BH03-(01~02)

Color Options: ● ●

Bluetooth Version: JL7003/5.4
 Battery Capacity: 300mAh
 Charging Time: 3H
 Standby Time: About 3 years
 Play time: 60% Volume Folk Song 36H
 Speaker Size: $\Phi 40$ mm
 Speaker Sensitivity: 123 ± 3 db
 Impedance: 32 Ω
 Frequency Range: 20Hz-3kHz ± 3 db
 Microphone Sensitivity: 32 ± 3 db
 Rated Input (charging condition): 200mA
 Audio Interface: diameter 3.5
 Voltage: 5V



V5.4



300mAh



Type-C



ANC Hybrid Noise Cancelling Bluetooth Headphones

BH02-(01~02)

Color Options: ● ●

Bluetooth Version: V5.4
 Battery Capacity: CEL303450-600mAh
 Charging Time: 1.5h
 Standby Time: Theoretical Value 1000h
 Play Time: 69h
 Transmission Distance: 18m
 Speaker Size: 40mm
 Speaker Sensitivity: 122 ± 2.5 dB dB SPL@1kHz
 Impedance: 32 Ω
 Frequency Range: 20Hz-20KHz
 Microphone Sensitivity: 1kHz 0dB \rightarrow 1V/Pa-32 \pm 1dB
 Rated Input: 3W
 Audio Interface: Type-C



V5.4



600mAh



ANC Mics



HQ Sound Quality Bluetooth Headphones

BH01-02

Bluetooth Version: AC7006/5.4
 Battery Capacity: 500mAh
 Charging Time: 3.5H
 Standby Time: About 3 years
 Play time: 50H
 Speaker Size: Φ 40mm
 Speaker Sensitivity: 127 dB
 Impedance: 32 Ω
 Frequency Range: 50Hz-3kHz \pm 3dB
 Microphone Sensitivity: 38 \pm 3dB
 Rated Input (Charging Condition): 320mA
 Audio Interface: Diameter 3.5
 Voltage: 5V



Bluetooth Speaker

Stereo sound, long-lasting life



Portable Bluetooth Speaker

BS01-01

Bluetooth Version: JL 5.0
 Output: 5W *2
 Input: 5V/1A
 Signal-to-noise Ratio: \geq 80dB
 Lithium Battery: 3.7V/2000mA
 Usage Time: UP to 12 hours
 Support: BT/TF
 Hands-free Call Function
 Waterproof Level: IPX6
 TWS Pairing
 RGB Lighting
 Material ABS + Fabric
 Accessories: Charging Cable



360°Surround Sound Portable Bluetooth Speaker

BS02-01

Bluetooth: V5.3
 Input: DC 5.0V
 Power: 100W
 Battery: 15600mAh
 Touch Screen
 360°Surround



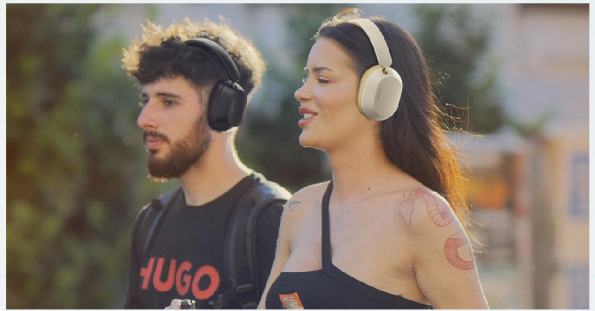
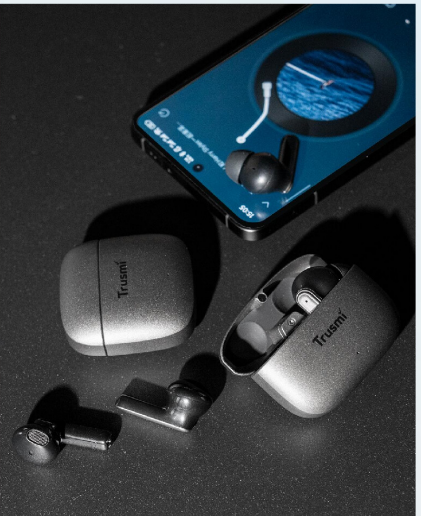
03 Product Portfolio



BLUETOOTH:
5.4



PLAY TIME:
36H



TWS